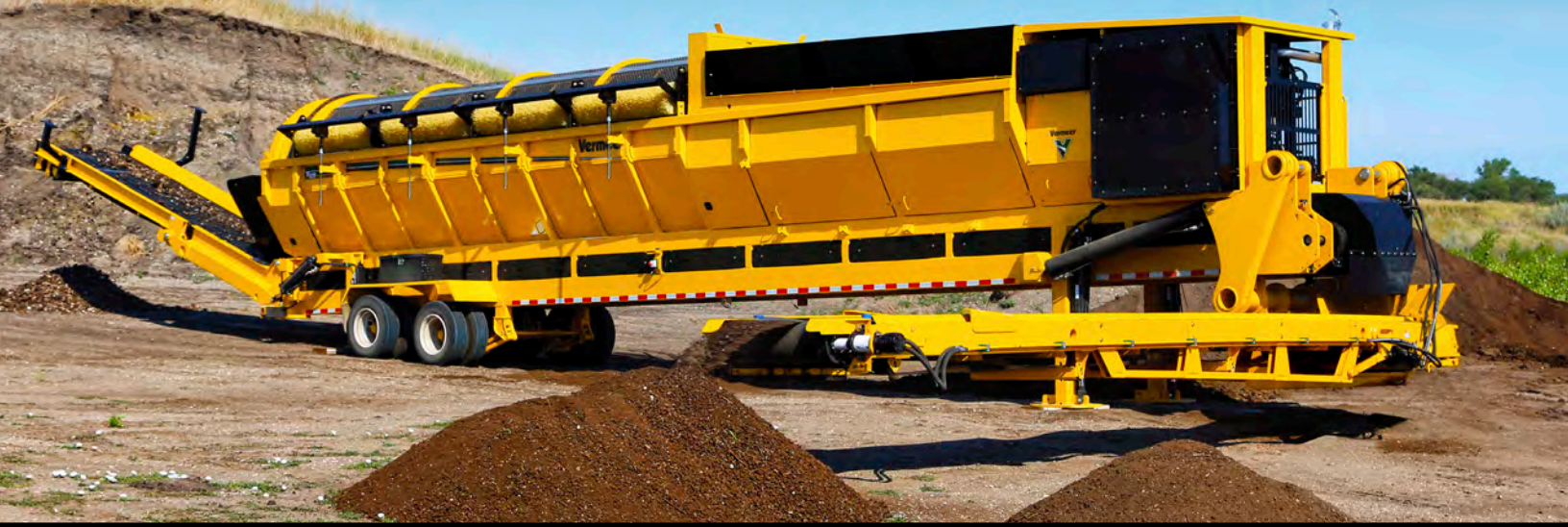


TR626 TROMMEL SCREEN



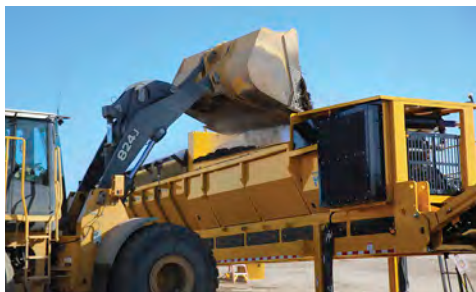
QUICK CHANGE SCREENS. Quicker and simpler screen changes can help improve jobsite efficiency, a particularly important feature when processing a range of materials that requires frequent screen changes.



HIGH PRODUCTION. The tensioned screens around the drum add rigidity, allowing use of smaller-gauge wire — which helps increase production capacity and enable processing of wetter material.



STAINLESS STEEL SCREEN OPTION. Stainless steel screens offer increased durability and help reduce the amount of screen blinding when working with wet or corrosive materials.



CONVENIENT LOADING. Large, low-feed hoppers are easy to load without the need for loading ramps.



ADVANCE CONTROLS. Operators can control the machine through either the Vermeer DP10 display mounted on the control panel, or through a handheld transceiver remote.



RADIAL STACKING CONVEYOR. Simple stacking conveyor with 180° arc increases the amount of material being stacked on the ground. Adjustable stacking height aids with dust control and helps avoid material being blown away.

TR626 TROMMEL SCREEN

GENERAL DIMENSIONS

Max transport length: 54.5' (16.6 m)

Max transport width: 113" (287 cm)

Max transport height: 13.4' (4.1 m)

Max operational length: 84.4' (25.7 m)

Max operational width: 113" (287 cm)

Max operational height: 15.9' (4.8 m)

Weight: 49,700 lb (22,543.5 kg)

Capacity: Approximately 200 cu yd (152.9 m³) per hr with .5" (12.7 mm) screens installed and material with moisture less than 40%

ENGINE

Make and model: John Deere PowerTech PVX 4.5L, Tier 4F

Engine rating: 134 hp (100 kW) @ 2400 rpm, 364 ft-lb (481.3 Nm) of torque @ 1500 rpm

Fuel tank capacity: 100 gal (378.5 L)

HOPPER AND APRON CONVEYOR

Hopper capacity: 5 cu yd (3.8 m³)

Hopper height: 9.5' (2.9 m) from ground level at operating incline

Apron conveyor rollers: 4" (10.2 cm) diameter, 14 qty

SCREEN DRUM

Drum diameter: 6' (1.8 m)

Max screen panels: 8

FINES CONVEYOR

Conveyor belt width: 36" (91.4 cm)

Conveyor belt stacking height: 16.6' (5.1 m) with drum at 4°

OVERS CONVEYOR

Max variable overs belt speed: 290 fpm (88.4 m/min)

Conveyor belt size: 48" (121.9 cm) wide with raised crescent

Conveyor belt stacking height: 3' x 10' (.9 m x 3 m)

STACKING CONVEYOR

Conveyor belt width: 30" (76.2 cm)

Conveyor belt stacking height: 16.6' (5. m)/5.5' (1.7 m) min with drum at 5°

Rotation: 180°

Fines belt speed: 640 fpm (195.1 m/min)

OPTIONS

Vermeer Confidence Plus® asset protection program

NOTES:

Vermeer Freeman Manufacturing, Inc. reserves the right to make changes in engineering, design and specifications; add improvements; or discontinue manufacturing at any time without notice or obligation. Equipment shown is for illustrative purposes only and may display optional accessories or components. Please contact your local Vermeer dealer for more information on machine specifications. Vermeer, the Vermeer logo and Equipped to Do More are trademarks of Vermeer Manufacturing Company in the U.S. and/or other countries. John Deere is a trademark of Deere & Company. © 2016 Vermeer Freeman Manufacturing, Inc. All Rights Reserved. Printed in the U.S.A. Please recycle.

